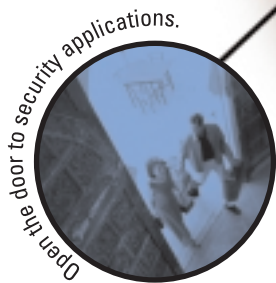




Pan, tilt and zoom—from anywhere



Open the door to security applications.



Monitor anybody, any time, anywhere

The Automated Internet Camera That Sees 360 Degrees.

It pans, it tilts, it zooms. All without the need for an attached computer. And it does it all behind the cover of a smoked-glass exterior. Which is precisely why the Pentax VersaCam IC-360 Internet Camera is an ideal solution for a variety of **MONITORING** and security applications.

Fully automated, the VersaCam IC-360 instantly sends high-quality, color images directly to a Web site, a local computer, or even your e-mailbox. You can quickly and easily see those images—as well as the **PAN, TILT AND ZOOM** functions—from anywhere you can access the Internet. Plus, the only software you need is a Web browser and a VersaCam plug-in which is downloaded directly from the camera.

The Heart Of A Host Of Security Applications.

Since the Pentax VersaCam IC-360 supports auxiliary input connectors, you can easily hook it up to number of different external devices—such as infrared sensors, switches, and alarm relays. In concert with the programmable alarm facilities, this gives you the ability to quickly develop **SECURITY** applications that are triggered on time or alarm-based devices. Even by itself, the VersaCam IC-360 gives you

the option of choosing between full-time monitoring, interval monitoring, or pinpoint-targeted motion-sensor triggering.

Yet another advantage of the VersaCam IC-360 Internet Camera is that it is another Pentax camera product. Which means you'll benefit from some of the most advanced optics **TECHNOLOGY** on the planet.

Imagine The Possibilities of Remote Camera Monitoring.

Since it can pan, tilt and zoom; hook up to a variety of other external devices; and it doesn't require an attached PC, the VersaCam IC-360 makes instituting any number of security applications easier than you ever imagined. Pentax can offer all of these benefits:

- Electronic auto-iris correctly captures images every time—at most light levels
- High-quality, color images at up to 720 x 486 pixel resolution
- Five different image transfer sizes to choose from—for clearer images
- Rapid transfer rates up to 30 frames per second
- Wavelet algorithm compresses digital images far more efficiently than JPEG
- Utilizes a standard Ethernet connection
- Can pan, tilt and zoom—and offers motion detection capabilities

VersaCam: It's Everywhere You Want To See.**Camera Specifications****Viewer**

- MS Internet Explorer Version 5.0 or later
- Netscape Version 4.5 - 4.7
- JAVA Applet for non-PC user (MAC or UNIX)

Hardware

- CPU - 32-bit RISC Embedded Processor
- OS - Embedded Linux
- Flash Memory - 8 MB
- RAM - 16 MB
- User-configuration FLASH - 4.5 MB

Video Channel

- Internal - 1 channel
- Output - 1 channel
- NTSC or PAL available

Network

- Protocol - TCP/IP, HTTP, ARP, RARP, PPP, ICMP, PPPoE, DHCP, FTP, and SMTP
- Connector - 10 Base-T Ethernet (RJ-45 connector)

Image Resolution

- 720x486, 720x243, 360x243, 180x121, 90x60 (pixels)

Compression

- Algorithm - Wavelet
- Rate - 10:1-200:1
- Max. 30 frames/sec.

Security

- Password Protection
- IP Address Filtering
- Image Encryption

Alarm & I/O

- Motion Detection
- Send e-mail automatically
- Send images through FTP automatically
- Two software configurable alarm inputs

Misc. Functions

- High Quality Image Area Setting
- Scheduled sending of e-mail or FTP images
- Image Quality Control (10 Levels)
- Gray/Progressive/Single-Shot Modes
- User customized home page publishing supported by FTP

Dimension

- Size - 6.3" x 7.91" (HxW) (201 mm x 160 mm)
- Dome - 5.2" (132 mm)
- Weight - 4.63 lb (2.1 Kg)

Camera

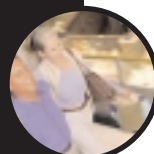
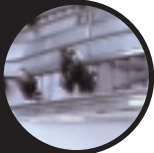
- Sensor - 1/4" color CCD
- Sensitivity - 3.0 Lux/0.5 Lux (Slow Shutter Mode)
- Iris - Auto
- Back Light Compensation
- Flickerless - Auto/Manual (Fixed 1/100)
- Zoom - 16x Optical, 8x Digital
- Aperture - F1.4 - 2.7
- Focal Length - 3.9 mm - 62.4 mm
- Focus - Auto/Manual

Pan/Tilt/Zoom

- Angle - Pan: 360°, Tilt: 0°-90°
- Speed - Pan: Manual Max, 120°/sec, Preset Max 240°/sec; Tilt: Manual Max, 120°/sec, Preset Max 180°/sec
- Preset - Max. 64 points
- Preset Group - Max. 6 Groups
- Control - by Web browser

Power Requirements

- 12VDC from supplied adapter



PENTAX®
VersaCam

